

<https://www.beliefparkingheater.com>

AIR PARKING HEATER

Belief air parking heater is available in diesel and gasoline versions. It is controlled by a small single-chip unit and uses a heating fan wheel to draw in cold air which is heated and blown into the area requiring heating, achieving independent heating for the spaces.



INTELLIGENT
PLATEAU

SUPER
QUIET

ENERGY
SAVING



FAST
HEAT

SAFE AND
RELIABLE

EASY TO
INSTALL

2KW AIR PARKING HEATER



Thermal power(W)	2000W	
Fuel type	Gasoline	Diesel
Rated voltage	12V	12V / 24V
Fuel consumption(l/h)	0.14 ~ 0.27	0.12 ~ 0.24
Rated power(W)	14 ~ 29	
Working temperature	-40°C ~ +35°C	
Working altitude	≤5000m	
Weight (kg)	2.6	
Dimensions(mm)	323 x 120 x 121	
Mobile phone control function	APP	

2.6KW AIR PARKING HEATER



Thermal power(W)	2600W	
Fuel type	Gasoline	Diesel
Rated voltage	12V	12V / 24V
Fuel consumption(l/h)	0.15 ~ 0.29	0.10 ~ 0.28
Rated power(W)	7 ~ 24	
Working temperature	-40°C ~ +35°C	
Working altitude	≤5000m	
Weight (kg)	2.7	
Dimensions(mm)	310 x 115 x 122	
Mobile phone control function	APP	

4KW AIR PARKING HEATER

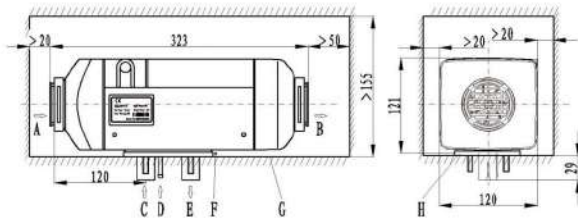
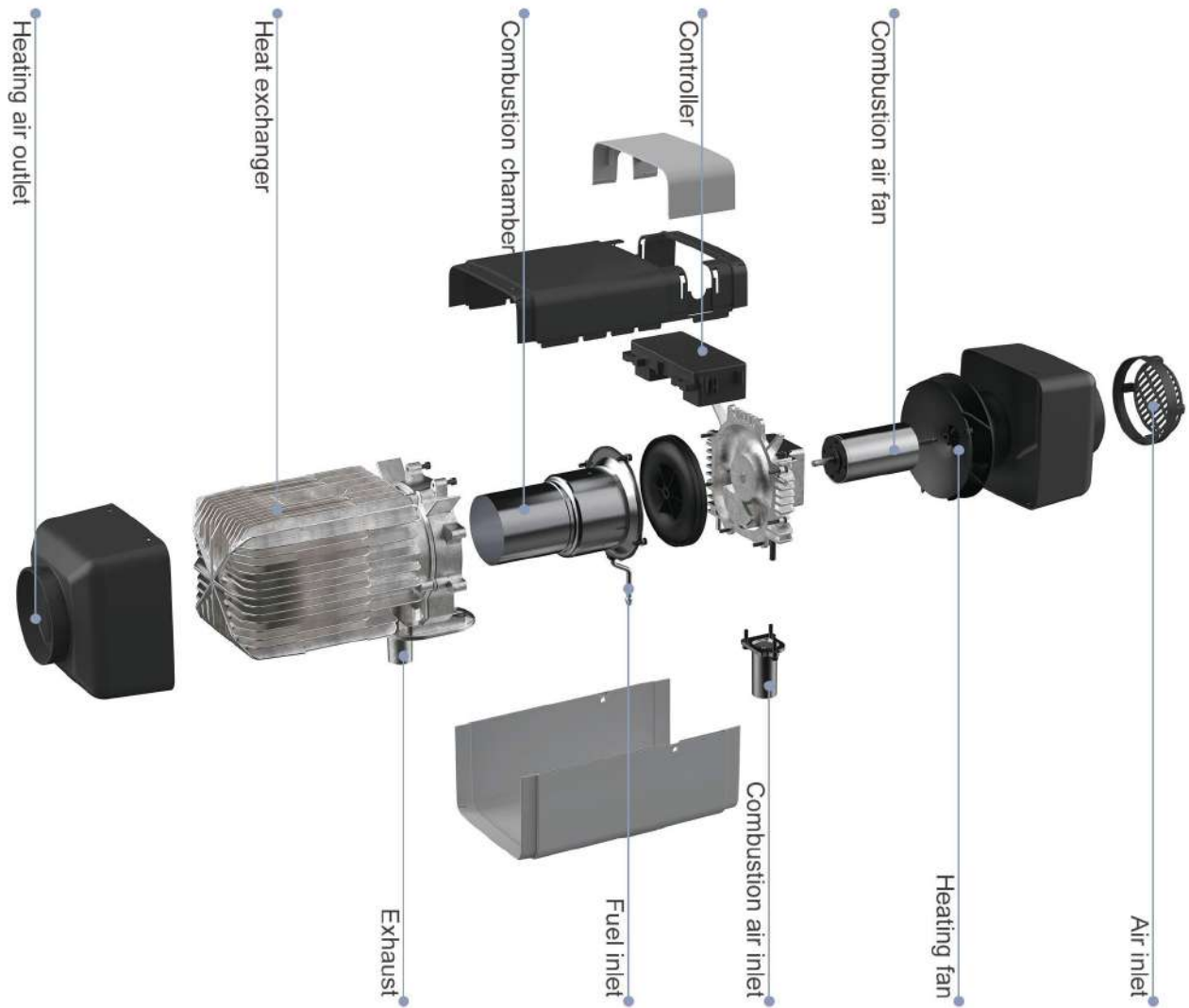


Thermal power(W)	4000W	
Fuel type	Gasoline	Diesel
Rated voltage	12V	12V / 24V
Fuel consumption(l/h)	0.18 ~ 0.54	0.11 ~ 0.51
Rated power(W)	9 ~ 40	
Working temperature	-40°C ~ +35°C	
Working altitude	≤5000m	
Weight (kg)	4.5	
Dimensions(mm)	371 x 140 x 150	
Mobile phone control function	APP	

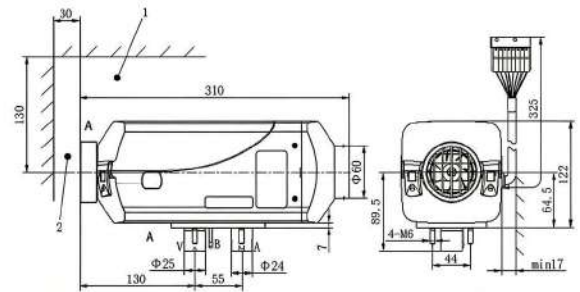
5KW AIR PARKING HEATER



Thermal power(W)	5000W	
Fuel type	Gasoline	Diesel
Rated voltage	12V	12V / 24V
Fuel consumption(l/h)	0.23 ~ 0.69	0.19 ~ 0.63
Rated power(W)	15 ~ 90	
Working temperature	-40°C ~ +35°C	
Working altitude	≤5000m	
Weight (kg)	5.9	
Dimensions(mm)	425 x 148 x 162	
Mobile phone control function	APP	



2KW AIR PARKING HEATER



2.6KW AIR PARKING HEATER

Comparison of Belief and Similar products

<p>Belief</p> <ul style="list-style-type: none"> -Low fuel consumption -Sufficient power -Excellent material -Diesel and gasoline version -Intelligent plateau -APP control and upgrade 	<p>VS</p>	<p>Similar products</p> <ul style="list-style-type: none"> -Insufficient power -High fuel consumption -Rough material -No gasoline version -No Bluetooth function -No APP upgrade
--	-----------	--



APP

Application scenarios



Applicable accessories



Fuel filter



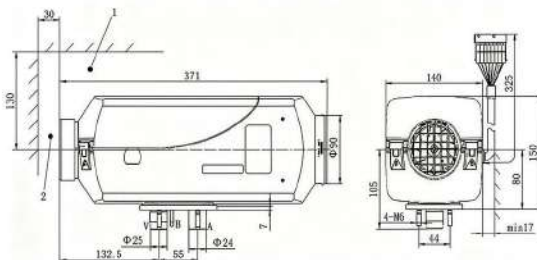
Fuel pump



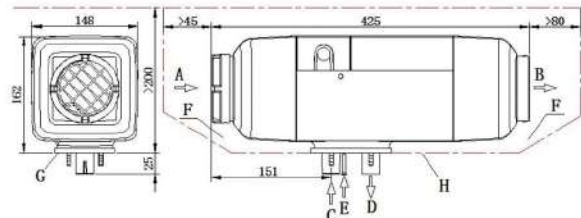
Knob control switch



LCD control switch



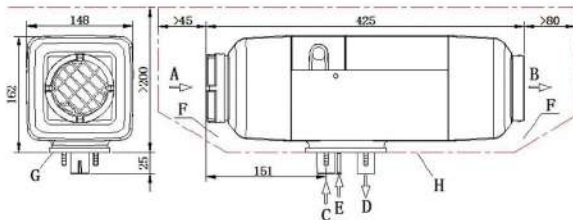
4KW AIR PARKING HEATER



5KW AIR PARKING HEATER

AIR PARKING HEATER (LPG/LNG)

Belief gas parking heater uses LPG or LNG, controlled by a small single-chip unit, the heating fan wheel sucks in cold air, heats and blows the warm air into the space that needs heating, achieving independent heating for the spaces.



Air parking heater

- Intelligent plateau function
- Compact structure, small size, easy installation
- Fuel saving, emission reduction and environmental protection
- Quiet and easy operation, fast heating and stable performance
- Self-protection and self-diagnosis function



Globe valve and pressure reducing valve assembly

- Working at low temperature
- Double stage pressure reduction and stable pressure
- Ensure safe and reliable gas supply



Dual gas valve

- Multi adjustment levels
- Patented product
- Specially designed for low-temperature heating
- Reliable

Application scenarios

Belief gas parking heater does not produce carbon deposits during combustion, without odor and its exhaust is environmentally. It is not only suitable for various gas vehicles, but also applicable to new energy and fuel campers, trailers, trucks and other vehicles.



Applicable accessories



Air outlet



Ducting



T-connector



LCD control switch

Technical parameter

Thermal power(W)	4000W	
Fuel type	LNG	LPG
Rated voltage	24V	
Fuel consumption(l/h)	145 ~ 386	120 ~ 320
Rated power(W)	5 ~ 30	
Gas rated pressure	30mbar	
Working temperature	-40℃ ~ +80℃	
Working altitude	≤5000m	
Weight (kg)	5.9	
Dimensions(mm)	425 x 148 x 162	
Mobile phone control function	APP	

WATER PARKING HEATER

Belief water parking heater is available in diesel and gasoline versions. When the heater is working, it circulates the car coolant through the heater chamber for heating, thereby increasing the temperatures of the car engine, battery, heater and driver's cabin. It can also heat the vehicle antifreeze and warm blower through the heater to provide hot water for the camper's daily use.

INDEPENDENT HEATING

ENERGY SAVING

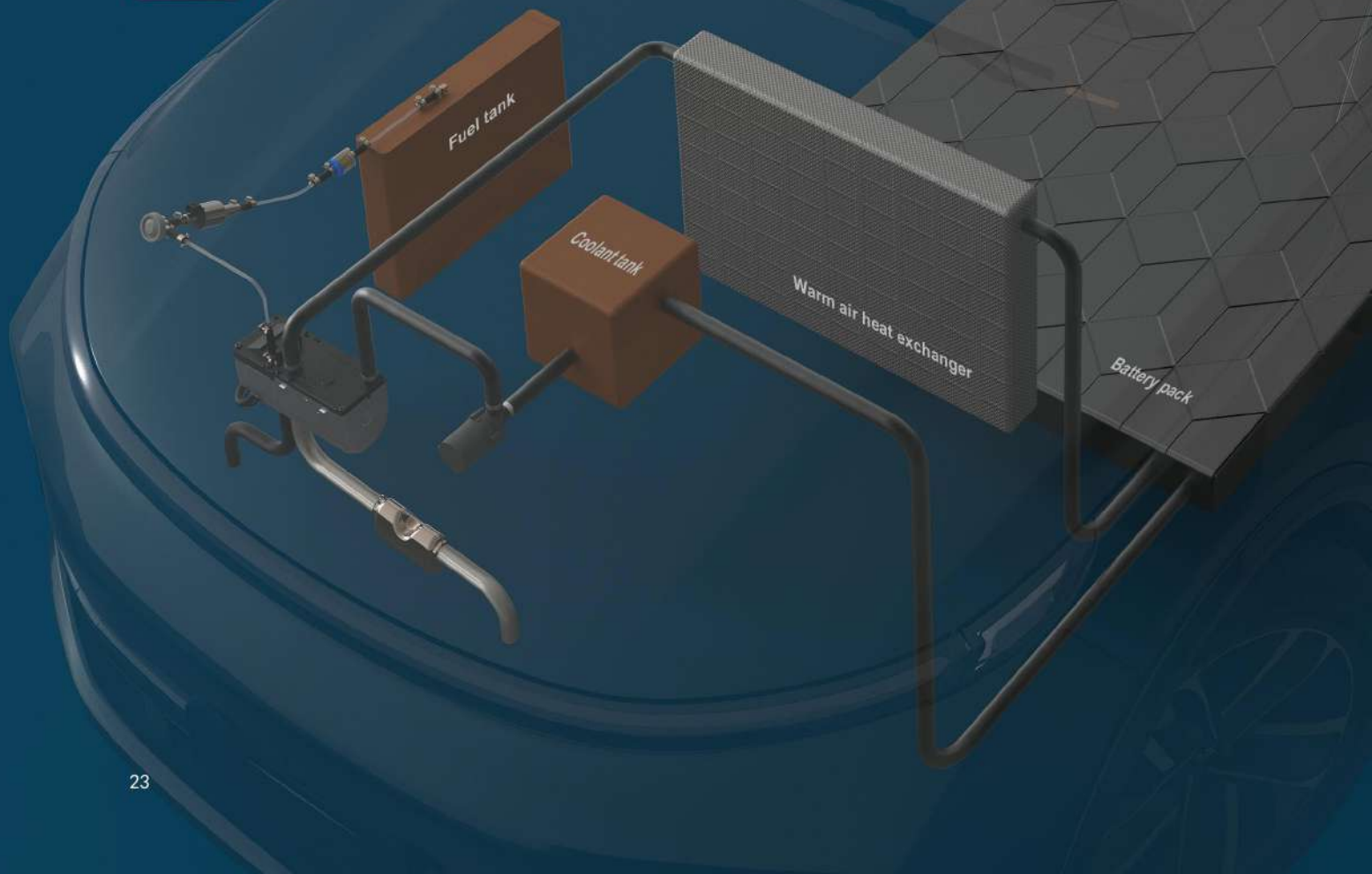
FAST HEAT



INTELLIGENT PLATEAU

SAFE AND RELIABLE

EASY TO INSTALL



Technical parameter

5KW WATER PARKING HEATER		
Thermal power(W)	5000	
Fuel type	Gasoline	Diesel
Rated voltage	12V	12V / 24V
Fuel consumption (l/h)	0.20 ~ 0.69	0.27 ~ 0.62
Rated power (W)	22 ~ 50	
Working temperature	-40°C ~ +35°C	
Working altitude	≤5000m	
Weight (kg)	2.7	
Dimensions(mm)	223 x 152 x 86	
Mobile phone control function	APP	

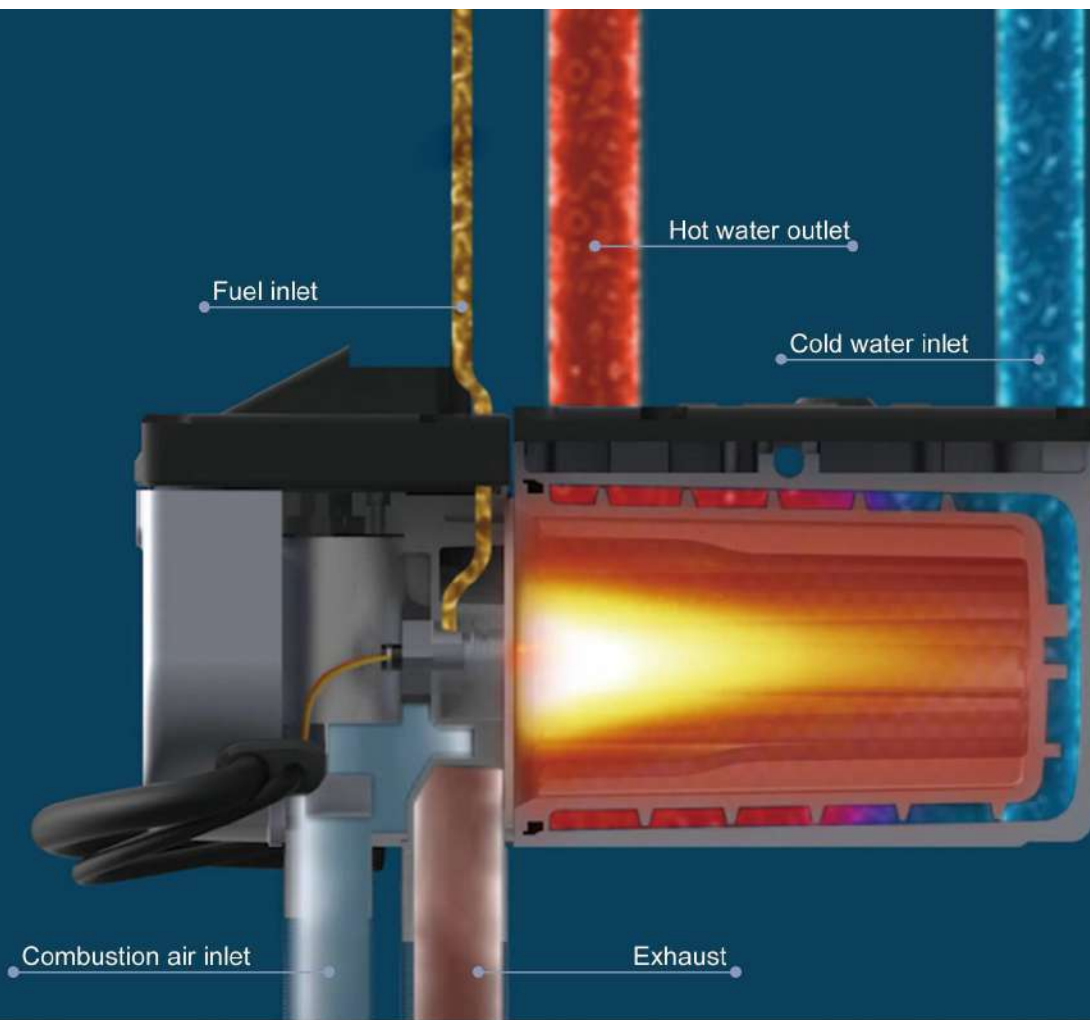
9KW WATER PARKING HEATER		
Thermal power(W)	9000	
Fuel type	Gasoline	Diesel
Rated voltage	12V	12V / 24V
Fuel consumption (l/h)	0.25 ~ 1.00	0.19 ~ 0.90
Rated power (W)	37 ~ 90	
Working temperature	-40°C ~ +35°C	
Working altitude	≤5000m	
Weight (kg)	4.8	
Dimensions(mm)	384 x 133 x 193	
Mobile phone control function	APP	

5KW water parking heater application scenarios



9KW water parking heater application scenarios





Comparison of Belief and Similar products

<p>Belief</p> <ul style="list-style-type: none"> -Small size -Low fuel consumption -Low noise -Large flow -Intelligent plateau -APP control and upgrade -Full power 	<p>VS</p>	<p>Similar products</p> <ul style="list-style-type: none"> -High fuel consumption -Loud noise -Low flow rate -No plateau function -No APP upgrade
---	-----------	---



APP

Applicable accessories



5KW coolant pump



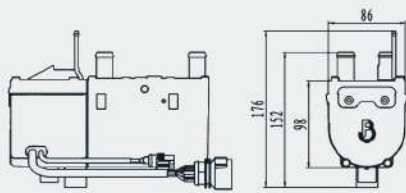
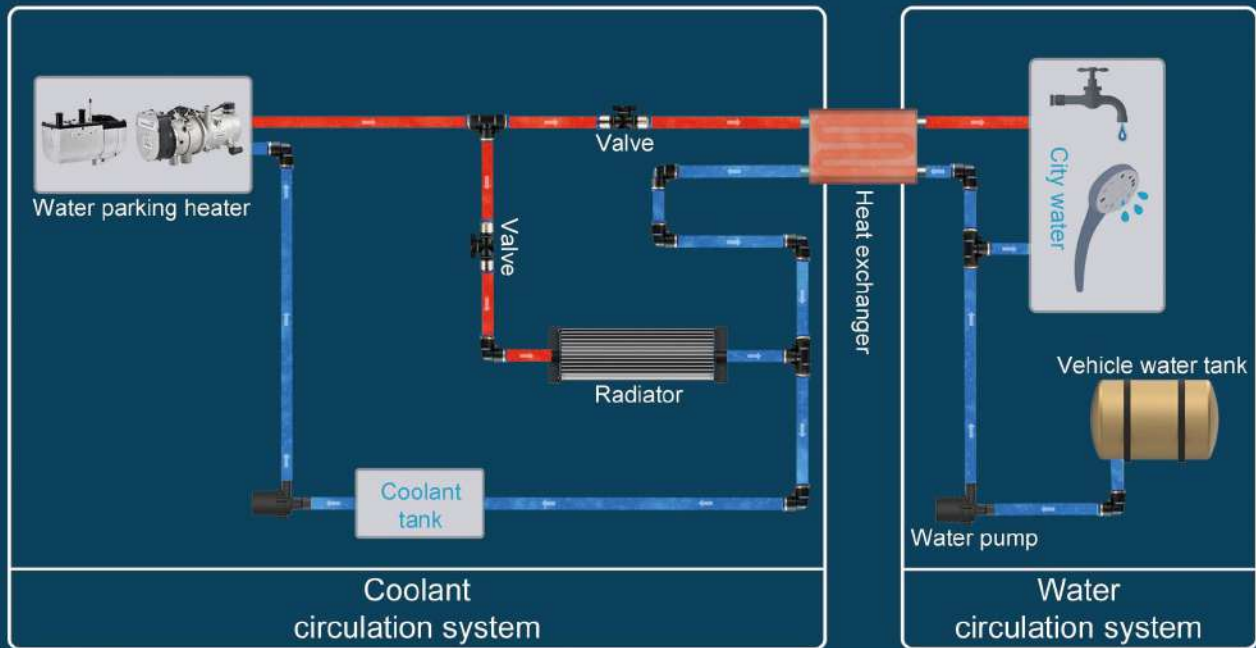
9KW coolant pump



Fuel pump



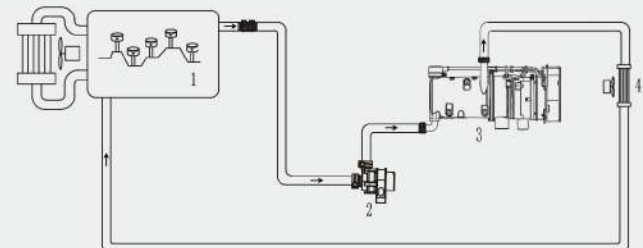
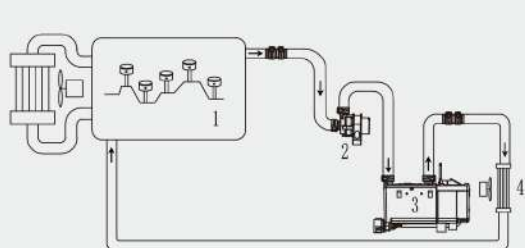
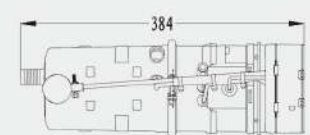
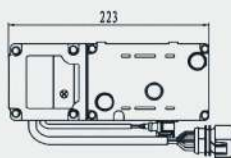
LCD control switch



5KW water parking heater



9KW water parking heater



1.Engine 2.Heater water pump 3.Heater 4.Warm air heat exchanger

SINGLE WAY REDUCED PRESSURE ANTI-COLLISION

Gas type:liquefied gas(propane/butane)

Intake pressure: 0.3-16bar

Output pressure: 30mbar

Rated flow: 1.5kg/h

Working temperature: -20°C ~ +50°C

Net weight: 0.9kg

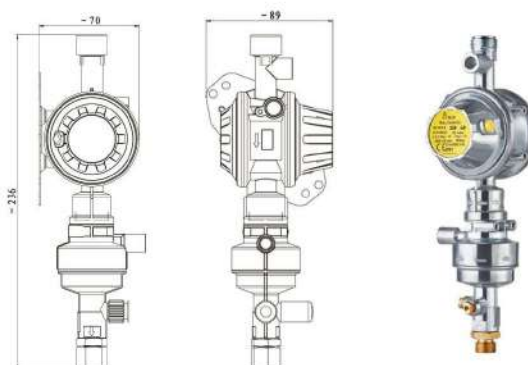
Specifications: 236×70×89mm

Pressure reducing valve inlet connection: external thread M20X1.5

Pressure reducing valve outlet: ferrule thread connection outer diameter ϕ 8mm or ϕ 10mm steel pipe

Product features:

1. System pipeline sealing test interface
2. Gas preheating expansion function
3. Gas pressure display interface



4. Automatically shut down the gas pipeline system in case of collision
5. Hand reset function
6. Hand valve

DOUBLE WAY REDUCED PRESSURE ANTI-COLLISION

Gas type:liquefied gas(propane/butane)

Intake pressure: 0.6-16bar

Output pressure: 30mbar

Rated conversion pressure: 750mbar

Rated flow: 1.5kg/h

Working temperature: -20 ~ +50°C

Net weight: 1.2kg

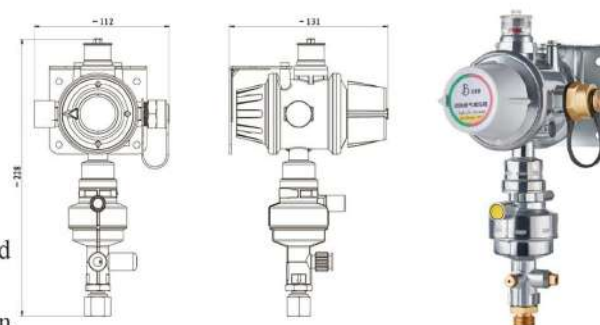
Specifications: 228×112×131mm

Pressure reducing valve inlet connection: external thread M20X1.5

Pressure reducing valve outlet: ferrule thread connection outer diameter ϕ 8mm or ϕ 10mm steel pipe

Product features:

1. System pipeline sealing test interface
2. Gas preheating expansion function
3. Gas pressure display interface



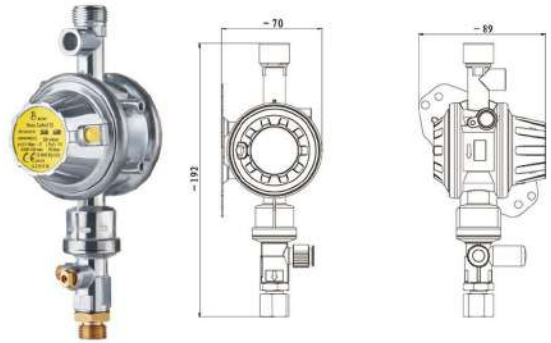
4. Automatically shut down the gas pipeline system in case of collision
5. Hand reset function
6. Hand valve
7. Automatic switching between empty bottle and full bottle
8. Gas exhaustion alarm function

SINGLE WAY PRESSURE REDUCING VALVE

Gas type:liquefied gas(propane/butane)
 Intake pressure: 0.3-16bar
 Output pressure: 30mbar
 Rated flow: 1.5kg/h
 Working temperature: -20 ~ +50°C
 Net weight: 0.7kg
 Specifications: 192×70×89mm
 Pressure reducing valve inlet connection: external thread M20X1.5
 Pressure reducing valve outlet: ferrule thread connection outer diameter ϕ 8mm or ϕ 10mm steel pipe

Product features:

1. System pipeline sealing test interface
2. Gas preheating expansion function
3. Gas pressure display interface
4. Hand valve

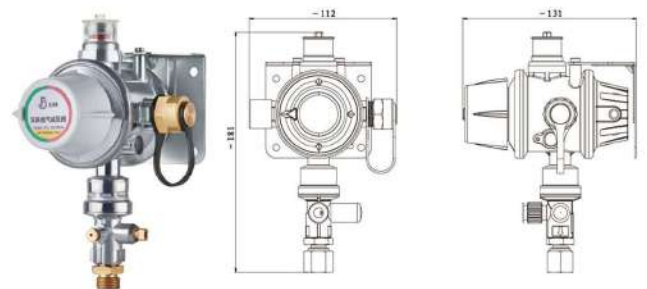


DOUBLE WAY PRESSURE REDUCING VALVE

Gas type:liquefied gas(propane/butane)
 Intake pressure: 0.6-16bar
 Output pressure: 30mbar
 Rated flow: 1.5kg/h
 Rated conversion pressure: 750mbar
 Working temperature: -20 ~ +50°C
 Net weight: about 1kg
 Specifications: 181×112×131mm
 Pressure reducing valve inlet connection: external thread M20X1.5
 Pressure reducing valve outlet: ferrule thread connection outer diameter ϕ 8mm or ϕ 10mm steel pipe

Product features:

1. System pipeline sealing test interface
2. Gas preheating expansion function
3. Gas pressure display interface



4. Hand valve
5. Automatic switching between empty bottle and full bottle
6. Gas exhaustion alarm function

SUPPRESSION LEAK DETECTION INSTRUMENT

Rated pressure: 150mbar

Net weight: 0.9kg

Specifications: 480×80×80mm

Product features: detect gas pipeline pressure sealing



GAS ANTI-EXPLOSION SWITCH(NATIONAL STANDARD)



Working temperature : -20 ~ +50°C

Maximum working pressure: 3MPa

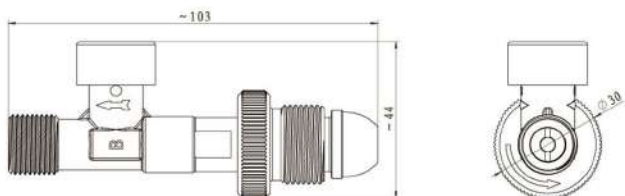
Handwheel nut:M22X1.5LH (left spiral pattern)

Ferrule nut:G3/8-LH(left spiral pattern)

Product features:

1.If the pipeline is damaged or leaks,the system will be activated the shut off function when the flow exceeds the rate limit.

2.In the event of a collision, the shut off function will be activated automatically.



GAS ANTI-EXPLOSION SWITCH(EUROPEAN STANDARD)



Working temperature: -20 ~ +50°C

Maximum working pressure: 3MPa

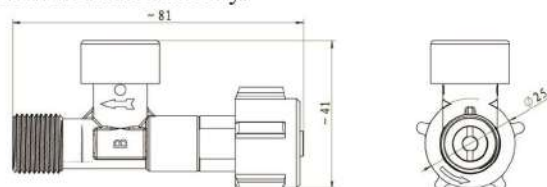
Handwheel nut: DIN477-W21.8X1/14 LH(left spiral pattern)

Ferrule nut:G3/8-LH(left spiral pattern)

Product features:

1.If the pipeline is damaged or leaks,the system will be activated the shut off function when the flow exceeds the rate limit.

2.In the event of a collision, the shut off function will be activated automatically.



Accessories

				
Product name	Ducting clip	Intake pipe fixing clip	Air filter	Fireproof and windproof cap
Specification	φ 60	φ 80	φ 25 / φ 23 φ / 20.5	φ 24
				
Product name	Air inlet pipe	Ducting	Ducting	Ducting
Specification	φ 23	φ 40	φ 60	φ 90
				
Product name	Air outlet	Air outlet	Air outlet	Air inlet and exhaust assembly
Specification	φ 60	φ 60	φ 90	φ 75 / φ 50
				
Product name	Air outlet	Adjustable outlet	Adjustable outlet	Air inlet and exhaust assembly
Specification	φ 40	φ 60	φ 90	φ 75 / φ 50

				
Product name	Reducing connector	Y type connector	Insulation sleeve	Silent exhaust pipe
Specification	φ 60 ~ φ 90	φ 60 ~ φ 40-φ 40	φ 30X1400	φ 50X950
				
Product name	T connector	T connector	T connector	Elbow
Specification	φ 60	φ 60	φ 90	φ 60
				
Product name	Elbow	Connector	Connector	Connector
Specification	φ 90	φ 40	φ 60	φ 90
				
Product name	Radiator	Silencer	External temperature sensor	Ferrule fitting
Specification	155X200X88	φ 22 / φ 24mm 167X85.5X43	φ 10X33	G1/2-φ8 stainless steel outer thread

				
Product name	Ferrule fitting	Ferrule nut	Rubber clamp	Fuel Filter
Specification	G1/2-φ10 stainless steel outer wire	φ8 transition joint M14X1.5	φ 8	φ 30X66
				
Product name	Hand valve	Hand valve	Water inlet valve	Pressure relief valve
Specification	BUC-12	BUC-16	55.5X40X53	0.35MPa 42X54X26
				
Product name	One-way valve	Fuel non-return valve	Rubber water pipe	Coolant filter
Specification	φ 18 / φ 20	φ 5X49	φ 19	φ 18 / φ 20
				
Product name	5KW coolant pump	9KW coolant pump	Water pipe connector	Water pipe reducing connector
Specification	12V / 18W 800l / h	12V / 50W 1500l / h	φ 20	φ 20 ~ φ 18

				
Product name	Elbow quick connector	Elbow quick connector	Elbow	Connector
Specification	SPV-12	SPV-16	φ 18	φ 18
				
Product name	Tee quick connector	Tee quick connector	Variable diameter quick connector	Variable diameter quick connector
Specification	SPE-12	SPE-16	SPG12-10	SPG16-10
				
Product name	Straight quick connector	Straight quick connector	Fuel suction pipe	Fuel suction pipe
Specification	SPU-12	SPU-16	φ 3X74	φ 5X600
				
Product name	Fuel pump fixing clamp	Fuel pump	Threaded connector	Threaded connector
Specification	Φ 32	12V / 24V φ 35X154	SPC-12-04	SPC-16-04

				
Product name	Internal thread connector	Internal thread connector	Internal thread connector	LCD control switch
Specification	SPC-10-04	SPC-12-04	SPC-16-04	82X37X21
				
Product name	Knob control switch	Knob control switch	LCD control switch	Touch switch
Specification	48X42X18	65X46X22	91X103X31	87X87X38
				
Product name	Gas high pressure connecting pipe	Gas high pressure pipe (national standard)	Gas high pressure pipe (European standard)	Gas filter
Specification	optional	optional	optional	Φ25X90
Product Description	Operating temperature: -30 ~ 70°C Maximum working pressure: 3MPa G3 Ferrule nut: G3/8-LH(Left-hand thread) Ferrule nut: M20×1.5	Operating temperature: -30 ~ 70°C Maximum working pressure: 3MPa Hand wheel nut: M22X1.5 LH (Left-hand thread) Ferrule nut: M20×1.5	Operating temperature: -30 ~ 70°C Maximum working pressure: 3MPa Air intake lock nut: DIN477-W21.8x1/14 LH(Left-hand thread) Ferrule nut: M20×1.5	

